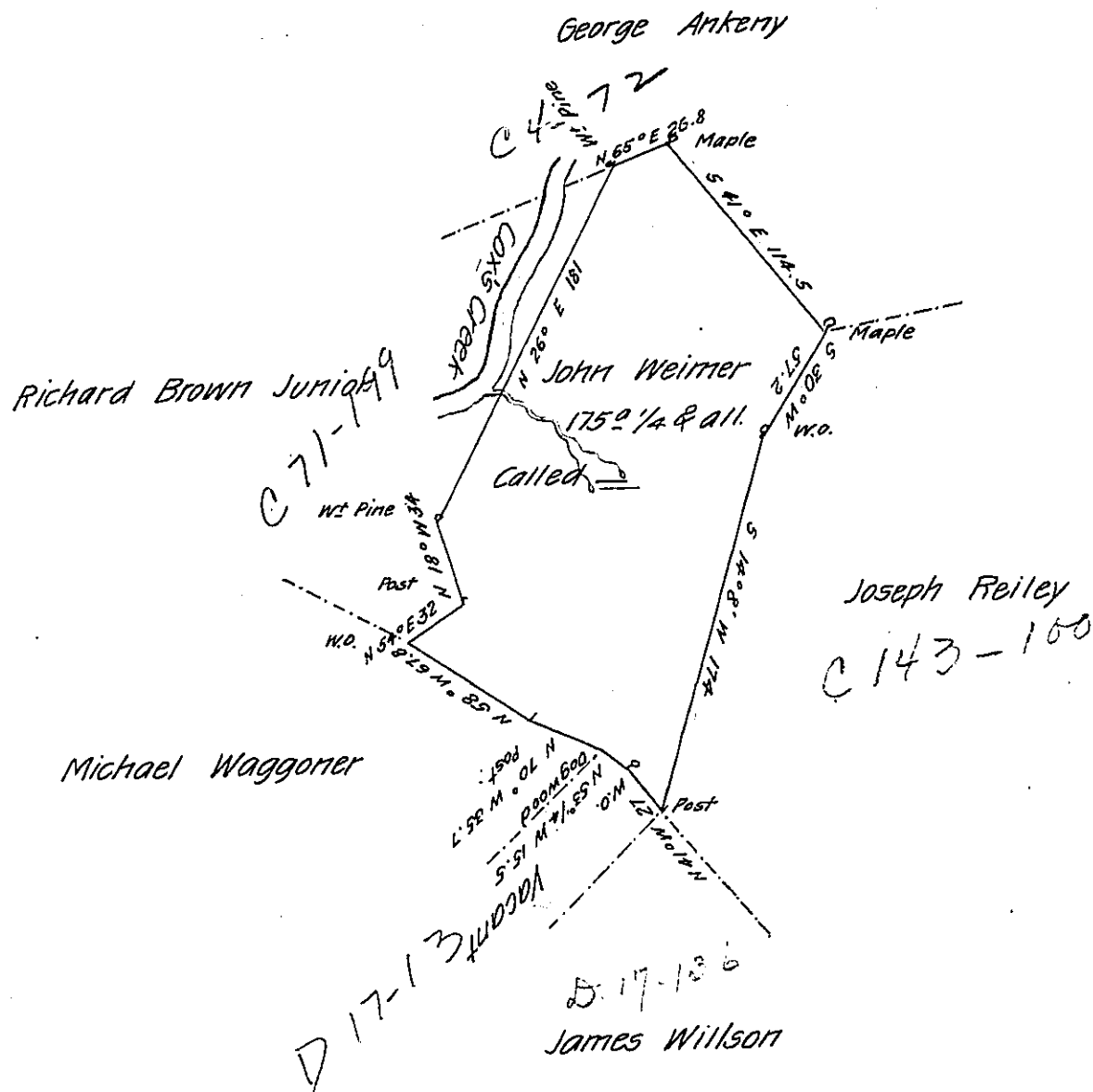


FORM NO 1.



Situate on the East Side of Coxes Creek in Milford Township Somerset  
County late Bedford County and Surveyed the 1<sup>st</sup> day of October 1792 in pursu-  
ance of a Warrant dated the 27<sup>th</sup> day of August 1790

P.-

Alexander M. Clean Deputy

To Daniel Brodhead Esq<sup>r</sup>  
Surveyor General.

IN TESTIMONY that the above is a copy of the original remaining on file in  
the Department of Internal Affairs of Pennsylvania, made  
conformably to an Act of Assembly approved the 16th day of  
February, 1833, I have hereunto set my Hand and caused  
the Seal of said Department to be affixed at Harrisburg,  
this twenty first day of June 1907

*Henry Howell*  
Secretary of Internal Affairs.